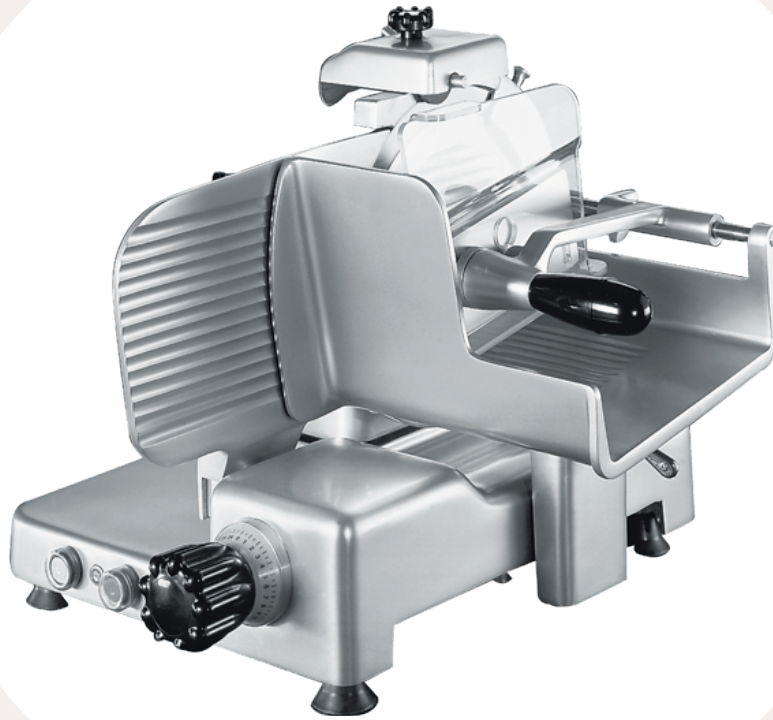


CES
Imports

USA Master Distributor for
MANCONI
DESIGN SLICERS BY TRADITION



Kolossal 250 VK VE

CES Imports

7250 Santa Fe Dr.
Hodgkins, Illinois, 60525
Tel: (773) 533-3333

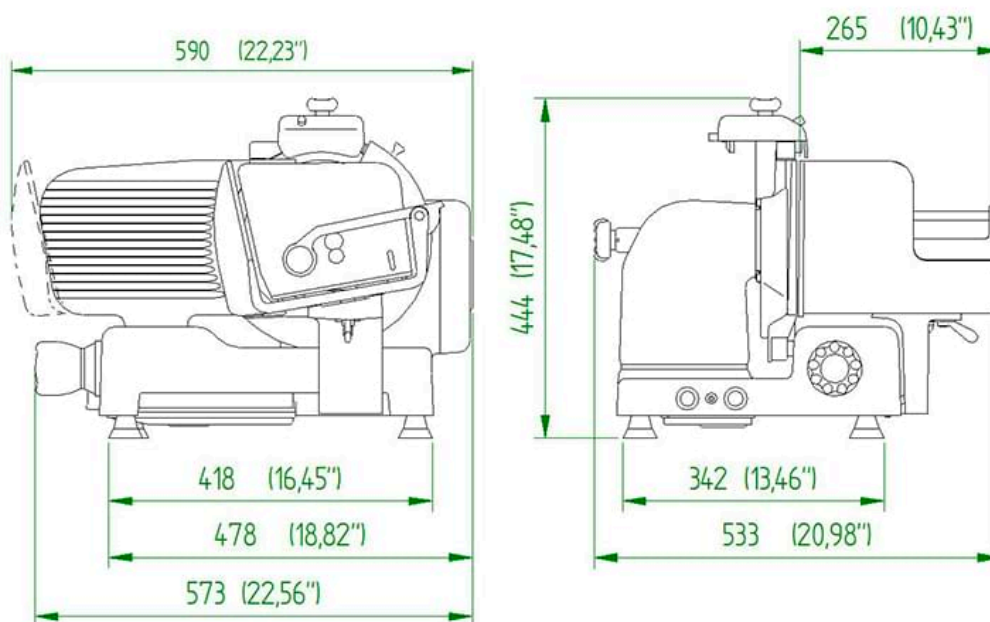
Website : www.ces-imports.com | Email : sales@ces-imports.com

Standard equipment

- » Gear box transmission
- » Easy to use built-in sharpener
- » Great capacity and precision in slicing
- » Low loading height; to reduce strain of the operator
- » Ultra smooth, polished aluminum surfaces
- » and careful slip grooves to reduce friction and simplify cleaning
- » Reduced counter space
- » Removable sharpener, blade cover, and meat deflector for easy cleaning

Technical Features

Overall dimensions	573 x 533 x 444 mm (22.5 x 21 x 17.5 inches)
Installation area	418 x 342 mm (16.5 x 13.5 inches)
Working area	590 x 533 x 444 mm (23.2 x 21 x 17.5 inches)
Blade diameter	250 mm (9.8 inches)
Blade speed	200 RPM
Slice thickness	0 to 24 mm (0 to 0.9 inches)
Carriage travel	250 mm (9.8 inches)
Electrical protection	IPX3 (Motor IPX5)
Net weight	28.5 kg (63 lbs)
Electrical specifications	120 V 60 Hz. Single phase
Cutting capacity	Ø 170 mm – 207 x 155 mm (Ø 6.7 inches - 8.1 x 6.1 inches)



This device complies with CE safety and hygiene regulations

All information believed to be correct at the time of publishing

Ver. 1.01 20220101